

基本規格 SPECIFICATIONS

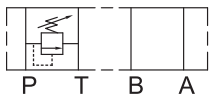
MRF-02 系列 SERIES			
最大工作壓力 Maximum Pressure	bar		250 bar (3500 PSI)
最大壓力設定範圍 Maximum Pressure Setting	bar	35, 70, 140, 210, 250 bar (500, 1000, 2000, 3000, 3500 PSI)	
最大流量 Maximum Flow	LPM		35 LPM (9.25 GPM)
重量 Weight	型式 Code: P,A,B	Kgs	1.2 Kgs (2.7 Lbs)
	型式 Code: C	Kgs	1.6 Kgs (3.5 Lbs)
	型式 Code: D	Kgs	1.3 Kgs (2.9 Lbs)
使用油品 Fluid Type			礦物性 耐磨性 Mineral.Anti-Wear
黏度範圍 Viscosity	cST		10-400 cST (59-1854 SSU)
使用溫度 Operating Temperature	°C		-15-70°C (-5-158°F)
清潔度 Contamination Level			NAS 12 級以內 Under NAS Class 12
表面處理 Surface Treatment			磷酸鹽皮膜處理 Zinc Phosphate Compound

型號說明 HOW TO ORDER

MRF - 02 P - 2 - 40 - K - A
 ① ② ③ ④ ⑤ ⑥ ⑦

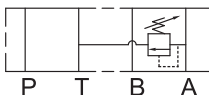
- ① 閥系列 Valve Series
 MRF = 疊加式溢流閥
 Modular Relief Valve
- ② 通稱口徑 Subplate Mounting Size
 02 = 通稱 Nominal 1 / 4" (6mm)
 ISO CETOP3
 DIN NG6
 NFPA D03
- ③ 控制迴路 Control Port
- ④ 壓力調整範圍 Adjustment Pressure
 0 = 2 to 35 bar (28 to 500 PSI)
 1 = 8 to 70 bar (115 to 1000 PSI)
 2 = 35 to 140 bar (500 to 2000 PSI)
 3 = 70 to 210 bar (1000 to 3000 PSI)
 4 = 70 to 250 bar (1000 to 3500 PSI)
- ⑤ 設計型號 Design No.
- ⑥ 調整桿型式 Adjustment
 省略 = 內六角調整 Hex. Screw With Nut
 K = 旋鈕調整 Knob
- ⑦ 調整桿方向 Orientation
 省略 = 標準; 調整桿在 B 側
 Omit = Standard; B Orientation
 A = 調整桿在 A 側
 A = A Orientation

MRF-P



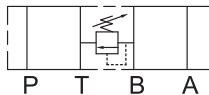
P 迴路控制
 (Relief P to T)

MRF-A



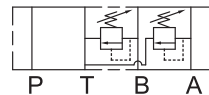
A 迴路控制
 (Relief A to T)

MRF-B



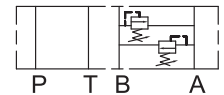
B 迴路控制
 (Relief B to T)

MRF-C



A,B 串聯迴路控制
 (Relief A,B to T)

MRF-D

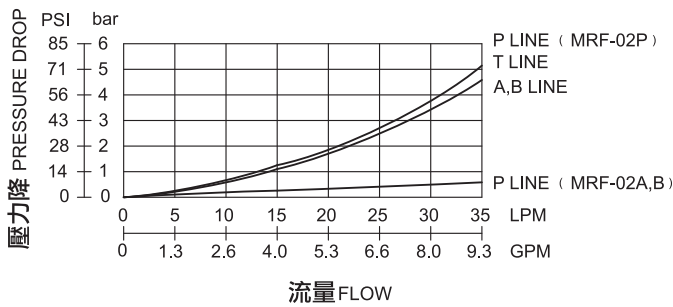


A,B 並聯迴路控制
 (Relief Crossover)

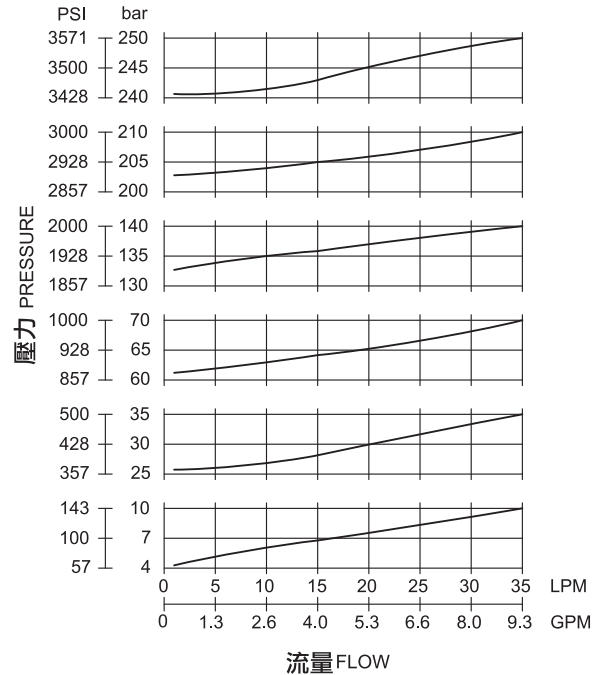
特性曲線 PERFORMANCE

測試條件 Test Conditions
 溫度 Oil Temperature: 50°C (122 °F)
 黏度 Viscosity: 35cST (163 SSU)

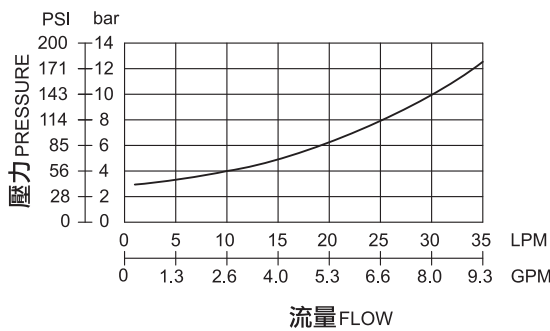
壓力降特性曲線 PRESSURE DROP



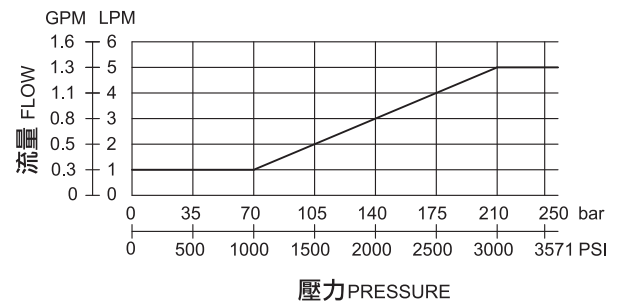
溢流-負載特性曲線 OVERRIDE CHARACTERISTICS



最小調整壓力特性曲線 MINIMUM ADJUSTMENT PRESSURE



最小流量特性曲線 MINIMUM FLOW CHARACTERISTICS



壓力設定

調整螺絲或把手順時針方向調整為壓力增加,逆時針方向調整為壓力減弱,
 壓力調整後請鎖緊六角螺帽或塑膠安裝螺帽

Pressure Setting

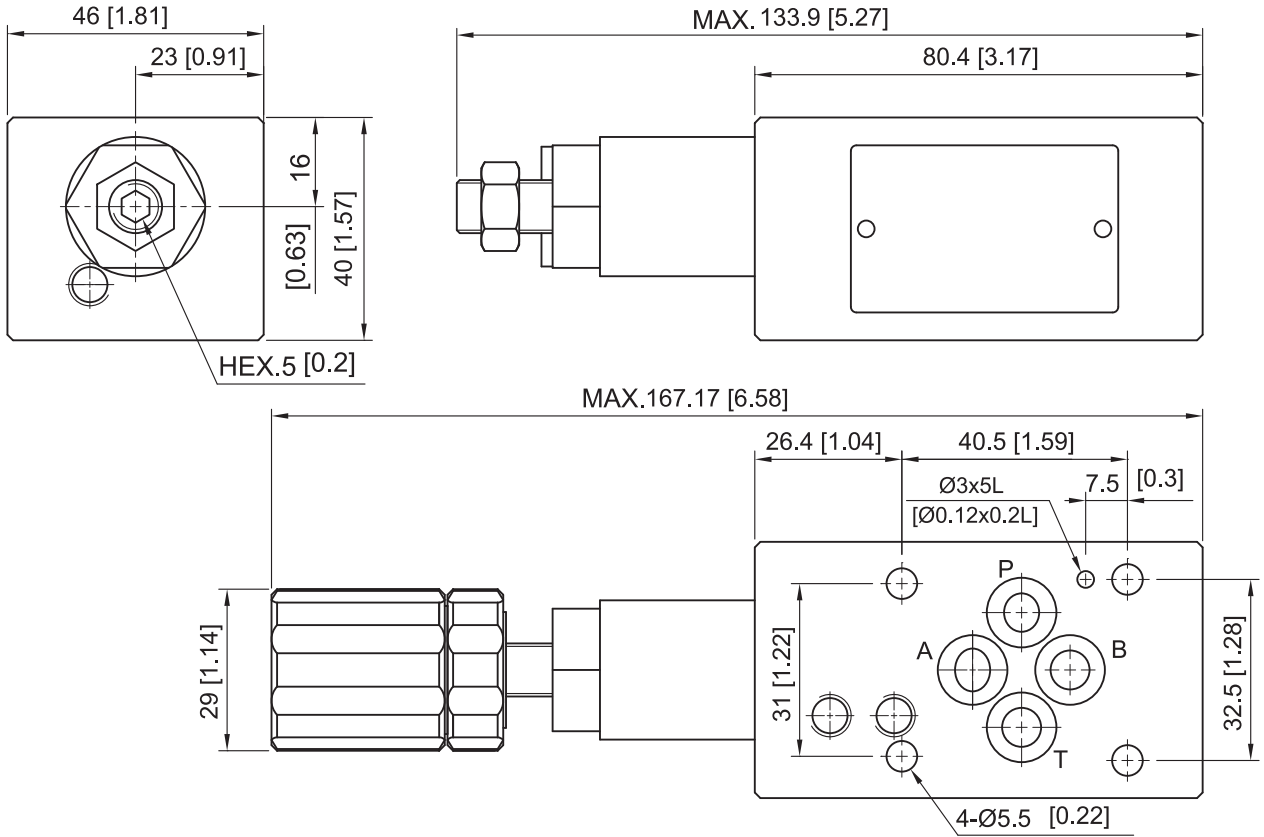
Facing to adjustment screw or knob, clockwise increasing pressure, counterclockwise decreasing pressure.
 Please tighten hex. nut or plastic setting nut after pressure adjusted.

外型尺寸 DIMENSIONS

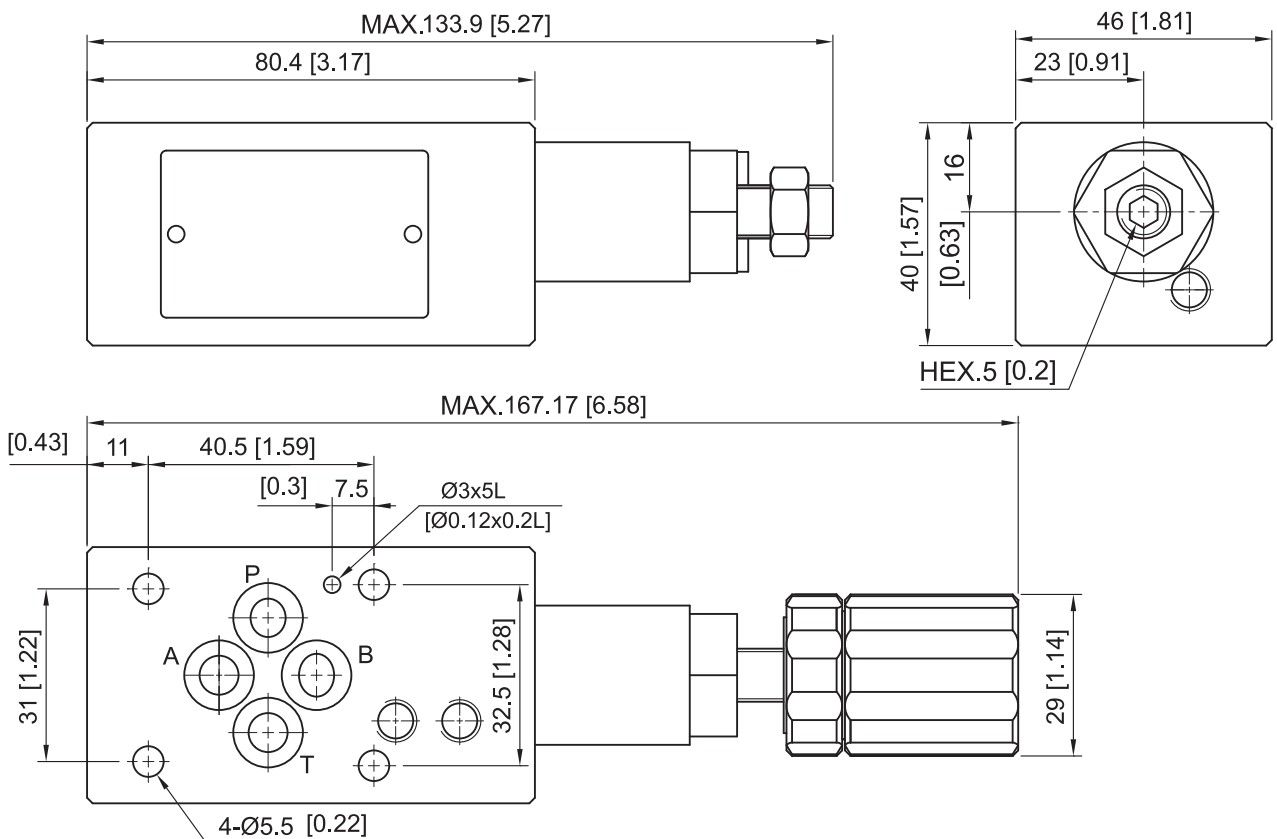
MRF-02P / A / B (A)

安裝面

Mounting Interface:
 ISO 4401-AB-03-4-A



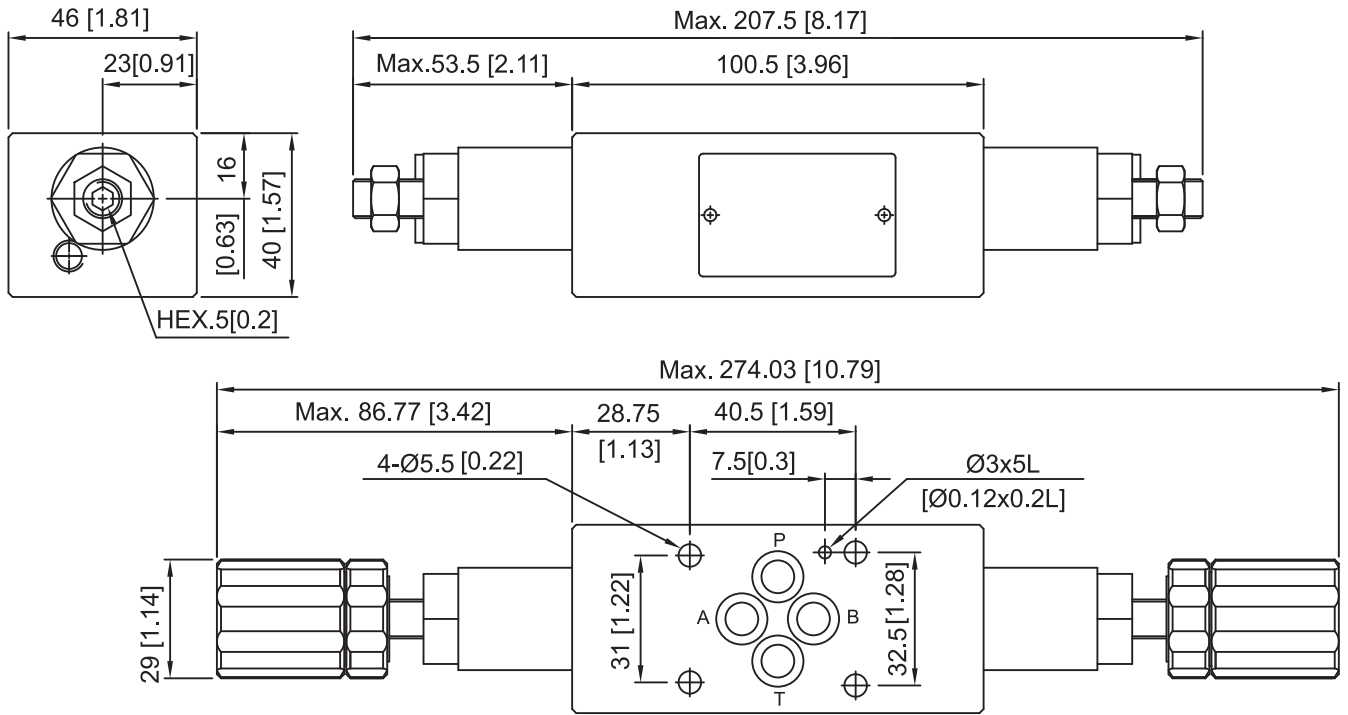
MRF-02P / A / B (B)



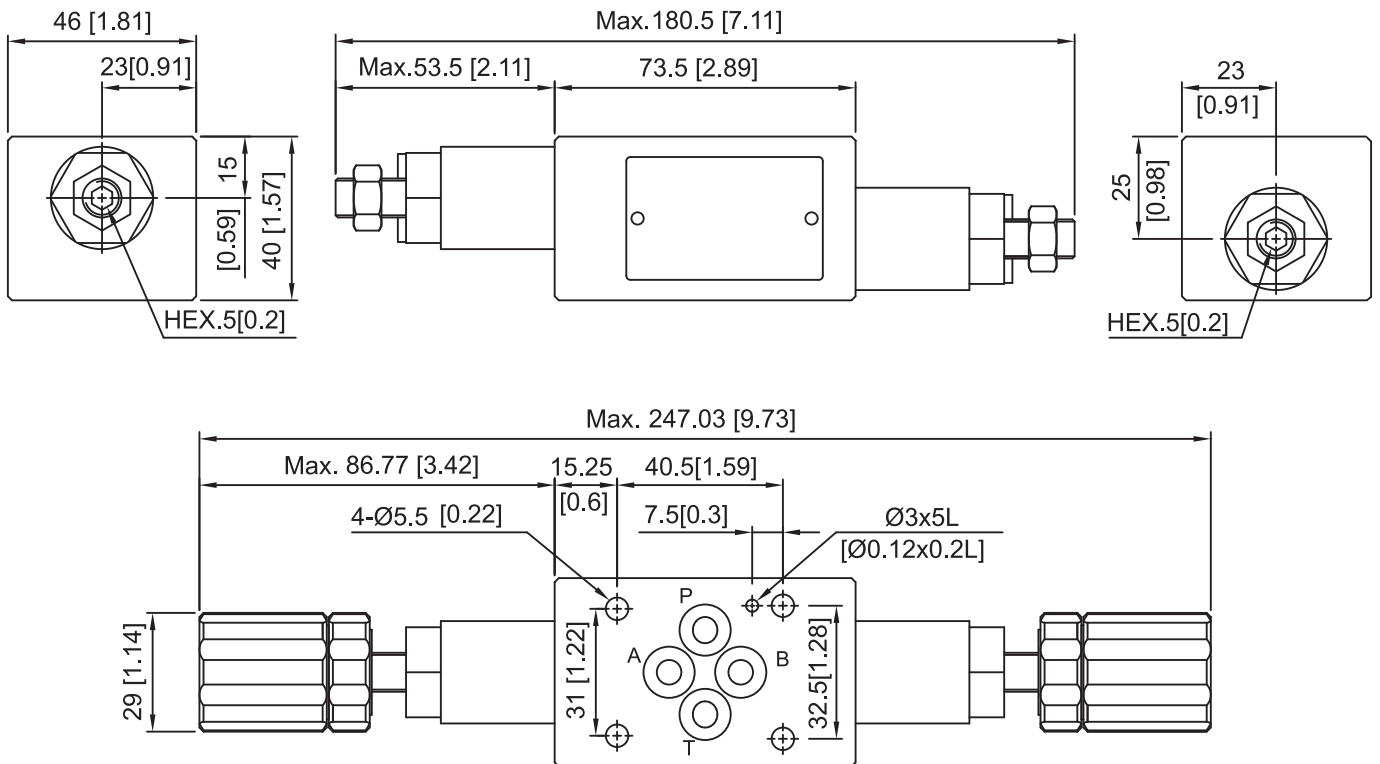
外型尺寸DIMENSIONS

安裝面
 Mounting Interface:
 ISO 4401-AB-03-4-A

MRF-02C

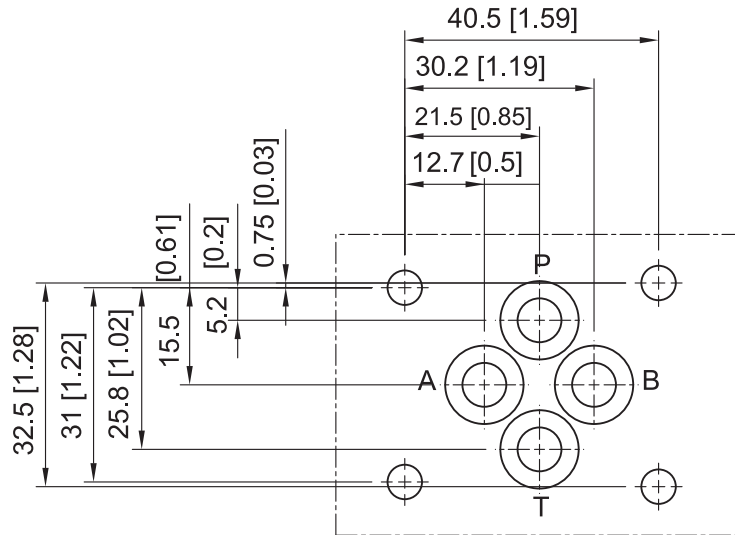


MRF-02D



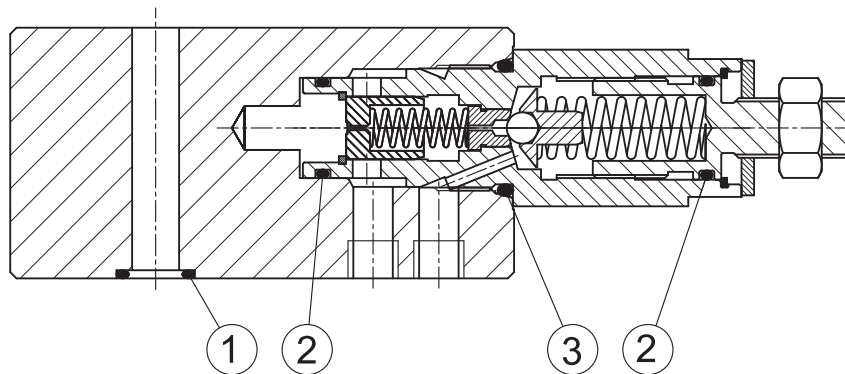
安裝面 MOUNTING INTERFACE

ISO 4401-AB-03-4-A

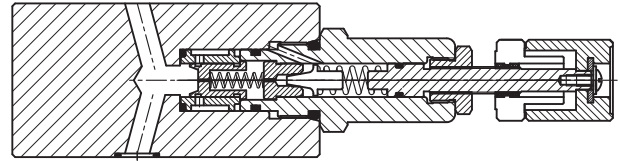


密封件 SEAL KITS

MRF-02



NO.	種類 Description	型號 Specification	數量 Q'ty	
			P/A/B	C/D
1	O 型環 O-ring	AS568-012 HS90°	4	4
2	O 型環 O-ring	AS568-014 HS90°	2	4
3	O 型環 O-ring	P-18 HS70°	1	2



基本規格 SPECIFICATIONS

MRF-03 系列 SERIES			
最大工作壓力 Maximum Pressure	bar	250 bar (3500 PSI)	
最大壓力設定範圍 Maximum Pressure Setting	bar	35, 70, 140, 210, 250 bar (500, 1000, 2000, 3000, 3500 PSI)	
最大流量 Maximum Flow	LPM	70 LPM (18.5 GPM)	
重量 Weight	型式 Code: P,A,B	Kgs	3.3 Kgs (7.3 Lbs)
	型式 Code: C	Kgs	4.3 Kgs (9.5 Lbs)
	型式 Code: D	Kgs	3.7 Kgs (8.2 Lbs)
使用油品 Fluid Type	礦物性 耐磨性 Mineral, Anti-Wear		
黏度範圍 Viscosity	cST	10-400 cST (59-1854 SSU)	
使用溫度 Operating Temperature	°C	-15-70°C (-5-158°F)	
清潔度 Contamination Level	NAS 12 級以內 Under NAS Class 12		
表面處理 Surface Treatment	磷酸鹽皮膜處理 Zinc Phosphate Compound		

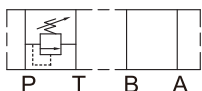
型號說明 HOW TO ORDER

MRF- 03 P - 2 - 30 - K - A

① ② ③ ④ ⑤ ⑥ ⑦

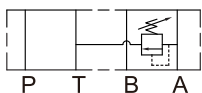
- ① 閥系列 Valve Series
 MRF = 疊加式溢流閥
 Modular Relief Valve
- ② 通稱口徑 Subplate Mounting Size
 03 = 通稱 Nominal 3 / 8" (9mm)
 ISO CETOP5
 DIN NG10
 NFPA D05
- ③ 控制迴路 Control Port
- ④ 壓力調整範圍 Adjustment Pressure
 0 = 2 to 35 bar (28 to 500 PSI)
 1 = 8 to 70 bar (115 to 1000 PSI)
 2 = 35 to 140 bar (500 to 2000 PSI)
 3 = 70 to 210 bar (1000 to 3000 PSI)
 4 = 70 to 250 bar (1000 to 3500 PSI)
- ⑤ 設計型號 Design No.
- ⑥ 調整桿型式 Adjustment
 省略 = 內六角調整 Omit = Hex. Screw With Nut
 K = 旋鈕調整 Knob
- ⑦ 調整桿方向 Orientation
 省略 = 標準 ; 調整桿在 B 側
 Omit = Standard ; B Orientation
 A = 調整桿在 A 側
 A = A Orientation

MRF-P



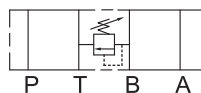
P 迴路控制
 (Relief P to T)

MRF-A



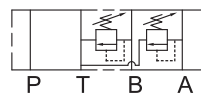
A 迴路控制
 (Relief A to T)

MRF-B



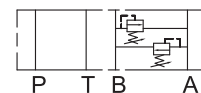
B 迴路控制
 (Relief B to T)

MRF-C



A,B 串聯迴路控制
 (Relief A,B to T)

MRF-D



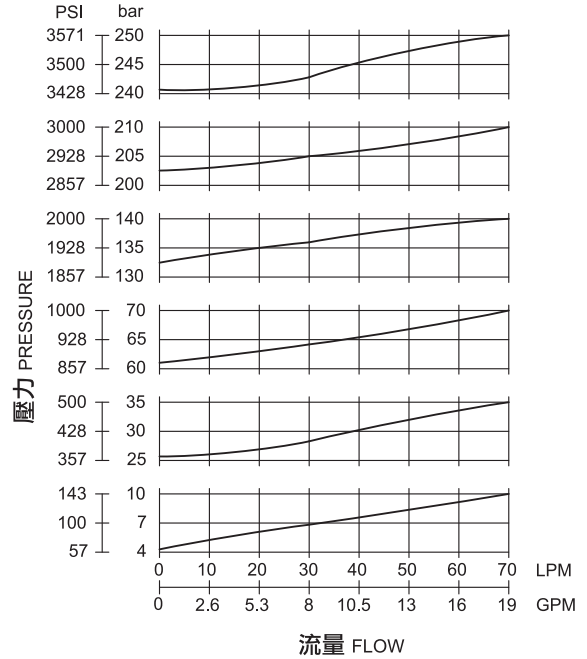
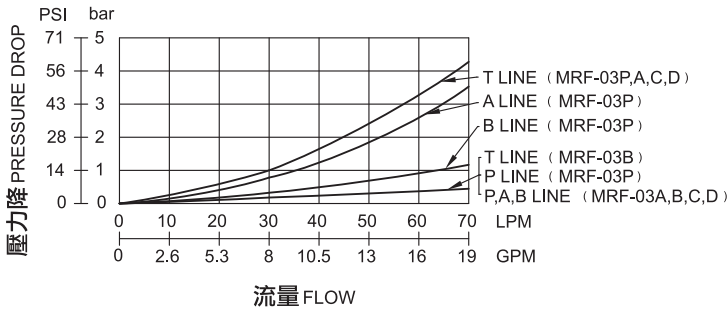
A,B 並聯迴路控制
 (Relief Crossover)

特性曲線 PERFORMANCE

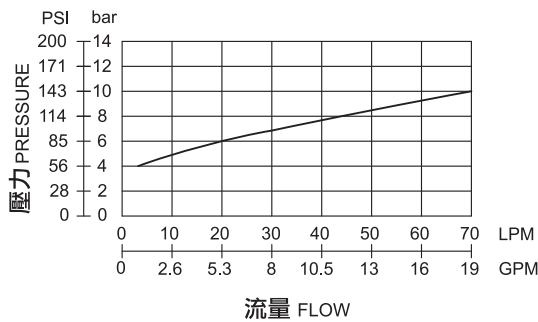
測試條件 Test Conditions
 溫度 Oil Temperature: 50°C (122°F)
 黏度 Viscosity: 35cST (163 SSU)

溢流-負載特性曲線 OVERRIDE CHARACTERISTICS

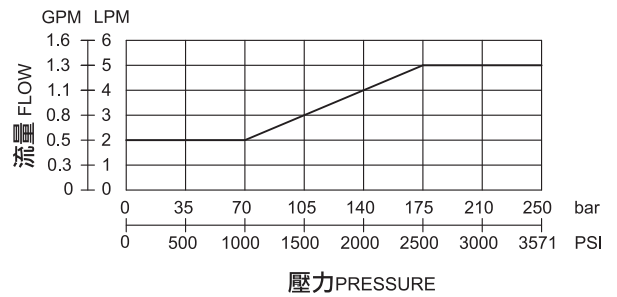
壓力降特性曲線 PRESSURE DROP



最小調整壓力特性曲線 MINIMUM ADJUSTMENT PRESSURE



最小流量特性曲線 MINIMUM FLOW CHARACTERISTICS



壓力設定

調整螺絲或把手順時針方向調整為壓力增加,逆時針方向調整為壓力減弱,
 壓力調整後請鎖緊六角螺帽或塑膠安裝螺帽

Pressure Setting

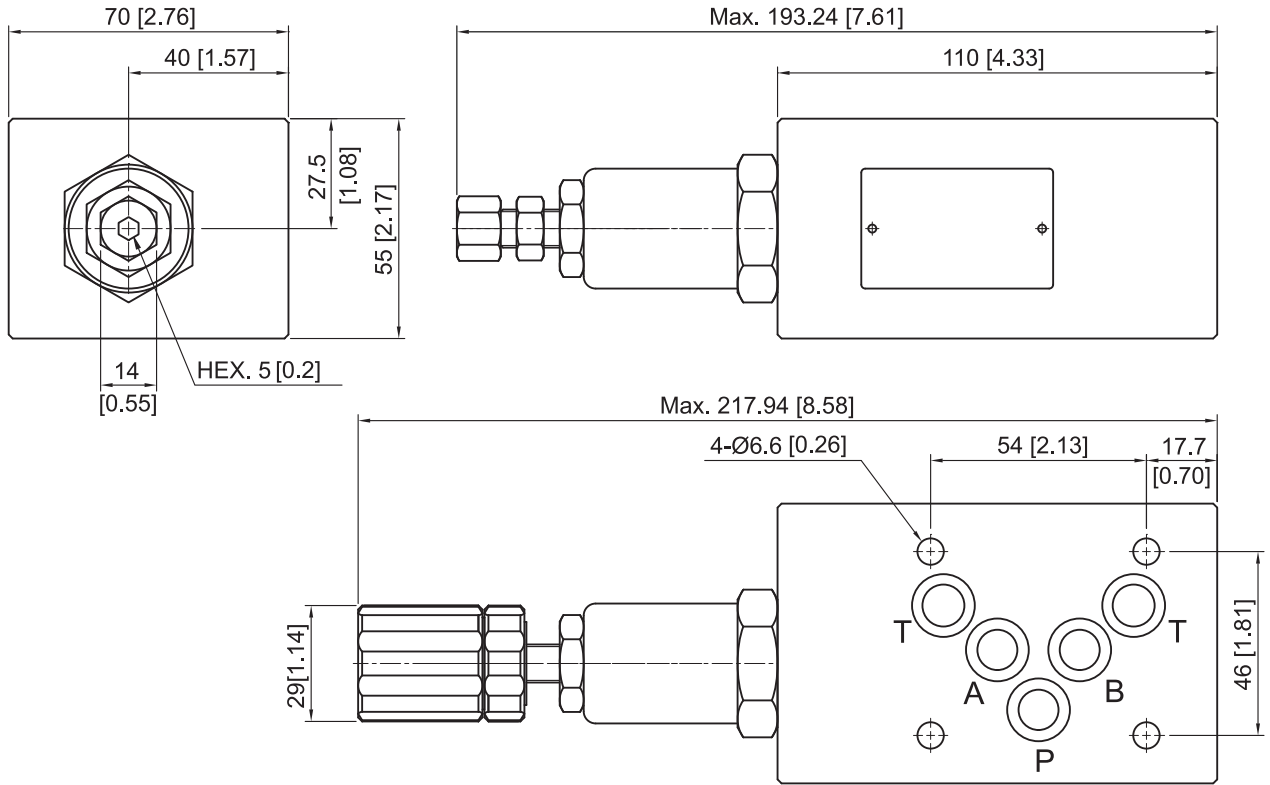
Facing to adjustment screw or knob, clockwise increasing pressure, counterclockwise decreasing pressure.
 Please tighten hex. nut or plastic setting nut after pressure adjusted.

外型尺寸 DIMENSIONS

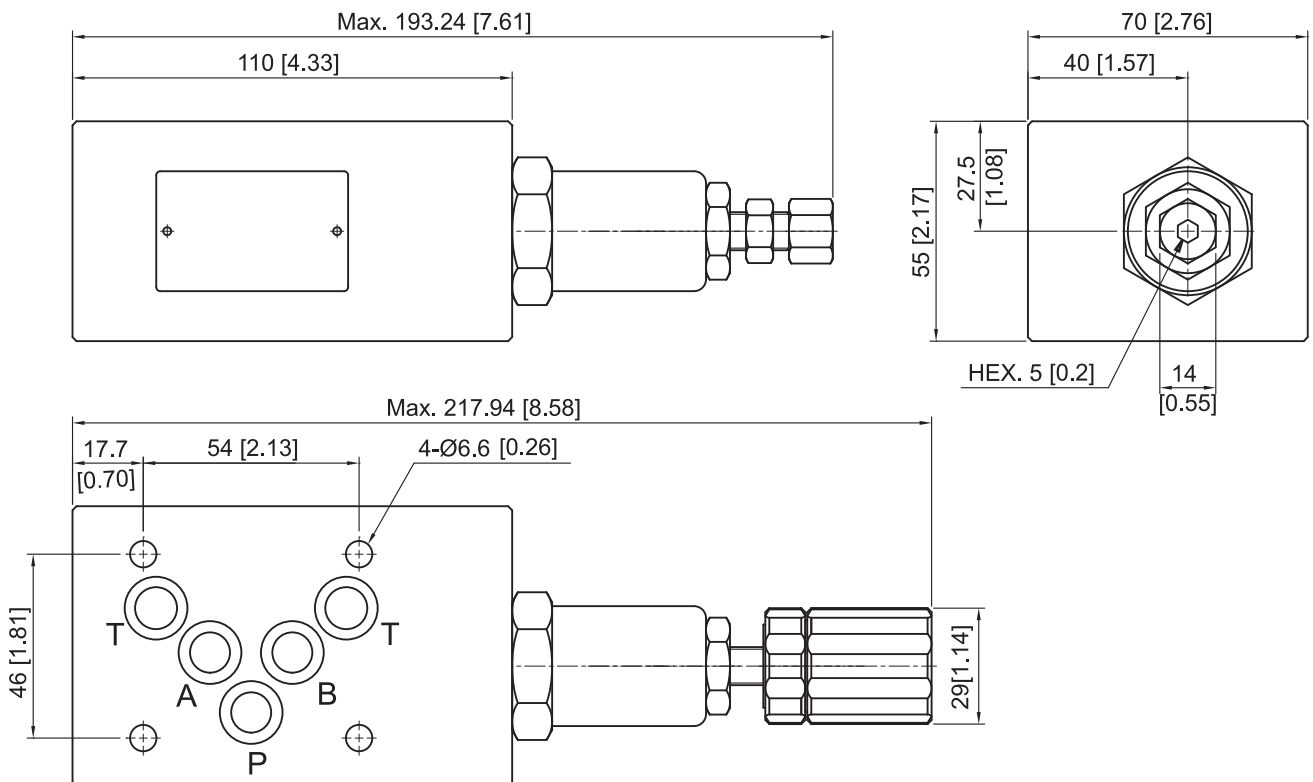
MRF-03P / A / B (A)

安裝面

Mounting Interface:
 ISO 4401-AC-05-4-A



MRF-03P / A / B (B)

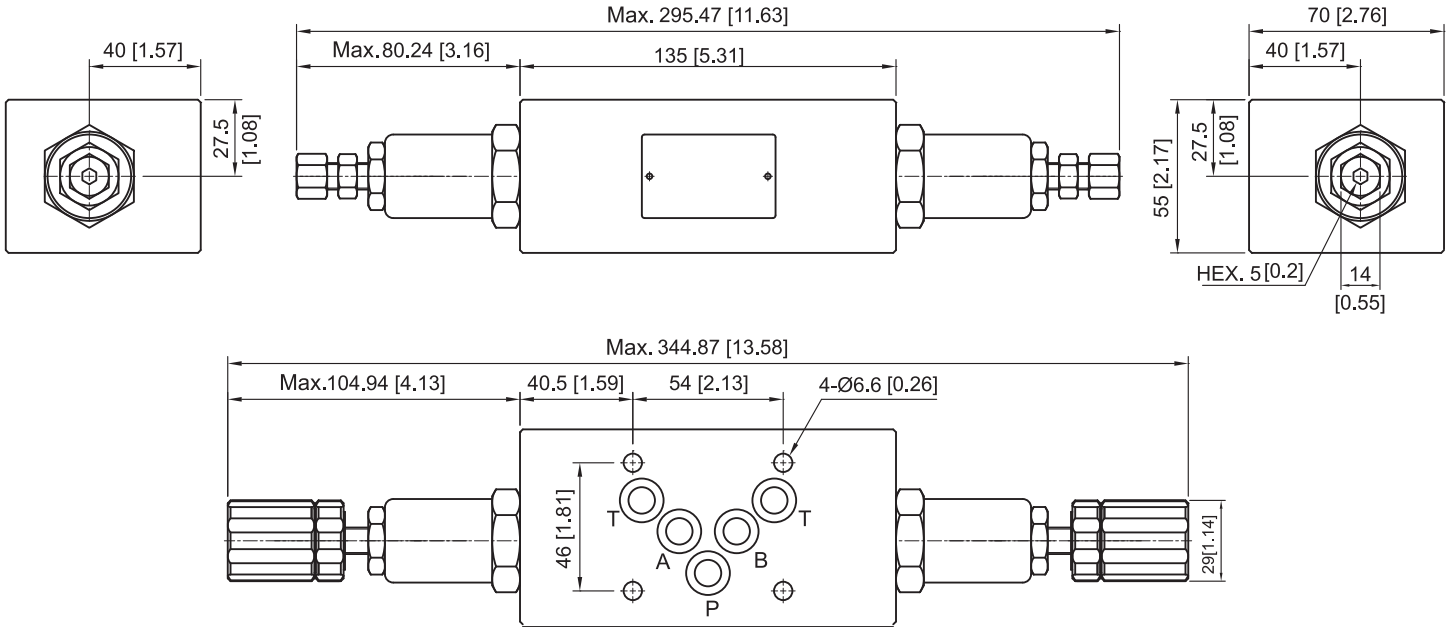


外型尺寸 DIMENSIONS

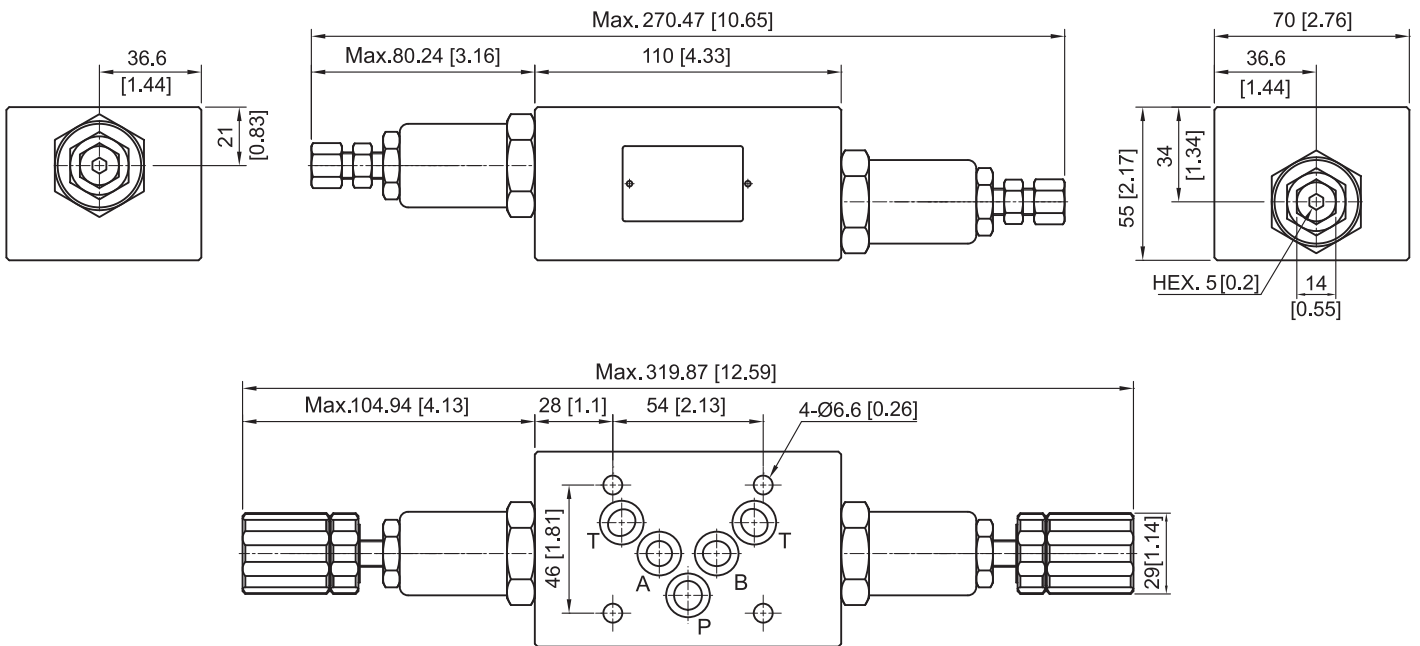
MRF-03C

安裝面

Mounting Interface:
 ISO 4401-AC-05-4-A

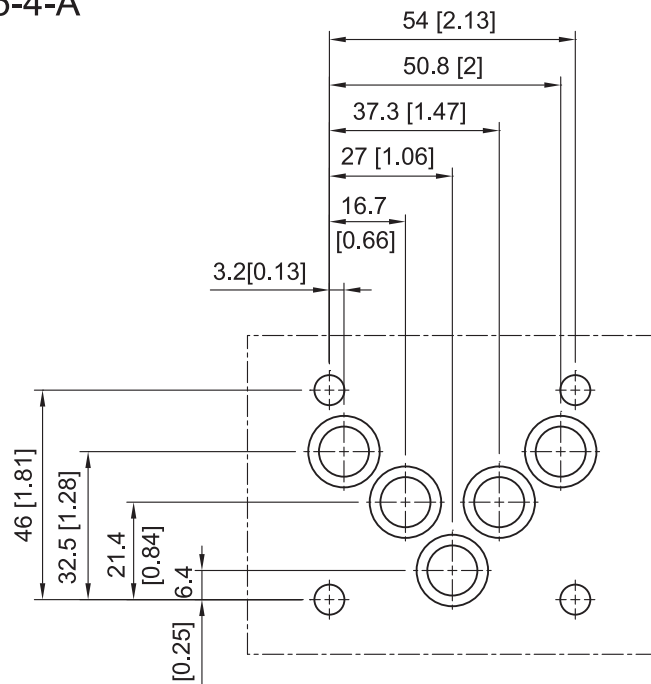


MRF-03D



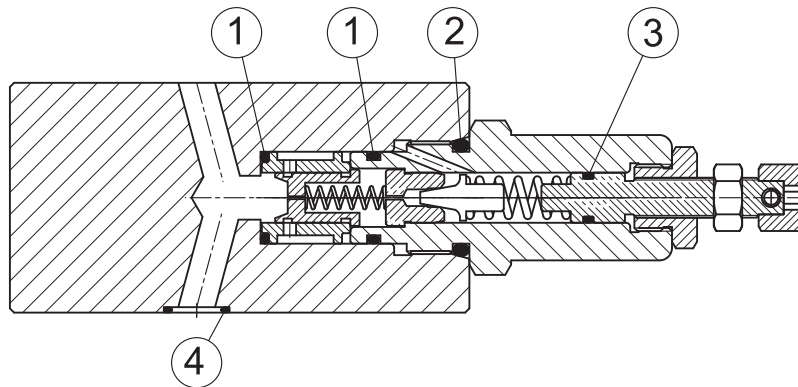
安裝面 MOUNTING INTERFACE

ISO 4401-AC-05-4-A



密封件 SEAL KITS

MRF-03



NO.	種類 Description	型號 Specification	數量 Q'ty	
			P/A/B	C/D
1	O 型環 O-ring	P-18 HS70°	2	4
2	O 型環 O-ring	P-22A HS70°	1	2
3	O 型環 O-ring	P-9 HS70°	1	2
4	O 型環 O-ring	AS568-014 HS90°	5	5